

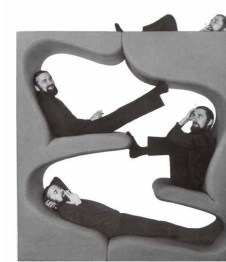
Los Loft
Los Angeles, California
2005; Built
Anton Schneider
Mike Satoh

The design intent of this 1000 sq.ft. loft, located in the historic street of Los Angeles, was aimed at creating a flexible live work space by allowing the rooms to be relocated around the main space of the loft according to needs. By treating the rooms as pieces of furniture, we were able to have a flexible space without sacrificing privacy or size of the living quarters.

When linked, the roof of the volumes work as an informal living area taking advantage of the 18' ceiling height.



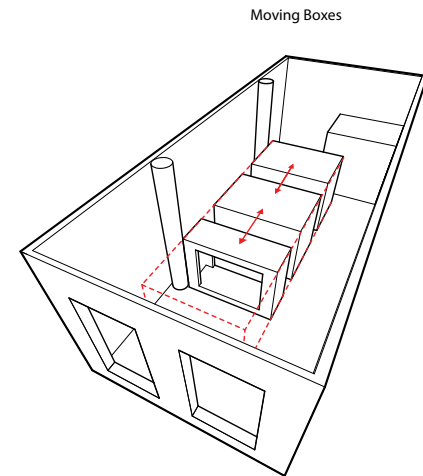
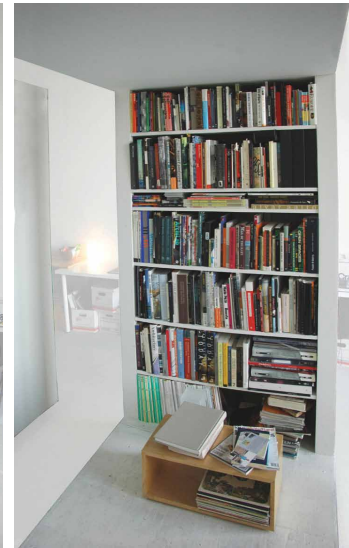
Stacked Eames House Study, 1948
Charles & Ray Eames

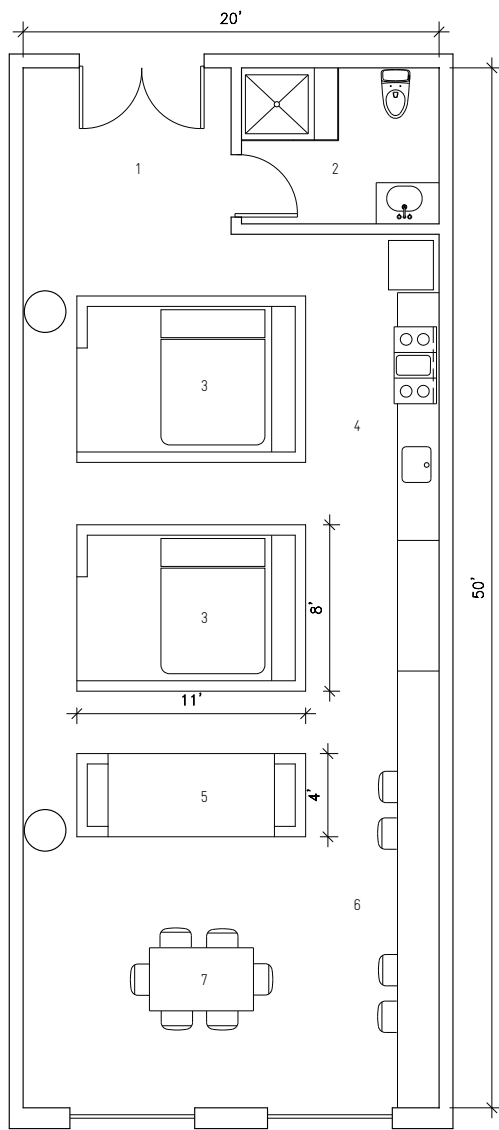


Pantower, 1969
Verner Pantone



Untitled, 1971
Donald Judd





1. Entry
2. Bathroom
3. Bedroom
4. Kitchen
5. Library
6. Work Stations
7. Dining Area

